



## KA0641 BULKHEAD GLAND KIT

- *Excellent EMC performance including TEMPEST levels*
- *Proven IRIS spring technology for overall screening*
- *Supplied with additional o-ring to allow alternative combinations of IRIS/o-ring*
- *Aluminium nickel bronze for marine environments/high salt spray resistance*
- *Environmental sealing to IP 66/67 with integral o-ring seals*

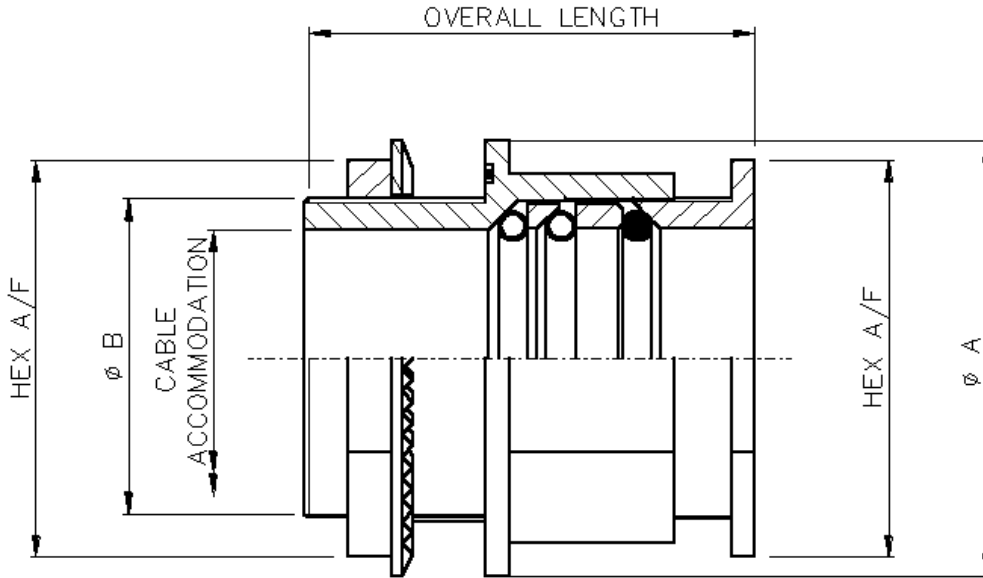
Suitable for use with both cable and KEC Supertube conduit, the **KA0641** bulkhead gland kit series is developed from the KG range of high performance, bulkhead glands in which a variety of techniques are used to provide electromagnetic compatibility, including TEMPEST level performance for both individual and overall screening coupled with environmental protection.

Suitable for both highly sophisticated and simpler solutions, the KG range is available at prices that are viable for small batch to high volume production runs. The range is ideal for all defence and aerospace as well as commercial and industrial applications.

**KEC Limited** is an EMC interconnect specialist that manufactures a wide selection of backshells, bulkhead/panel glands, conduit and conduit fittings and system harnesses.

KEC products are designed to suit all levels of screening requirements for EMI/RFI, EMP, TEMPEST together with environmental protection and are designed to help manufacturers comply with UK and EC screening directives.

KA0641 BULKHEAD GLAND KIT



TYPICAL PART NUMBER

**KA0641-03**

ENTRY CODE (TABLE 1, NOTE 3)

TABLE 1

ENTRY CODE	Ø A	Ø B	HEX A/F	CABLE ACCOMMODATION		OVERALL LENGTH		NATO STOCK NUMBER (NSN)
				MIN	MAX	MIN	MAX	
01	28.5	12.7	5/8"	1.6	3.6	54.4	65.4	5975-99-784-4169
02	31.8	15.9	3/4"	3.2	6.8			5975-99-967-8915
03	34.8	19.1	7/8"	4.0	9.9			5975-99-535-9093
04	38.1	22.2	1"	7.2	13.1			5975-99-246-2588
05	41.2	25.4	1 1/8"	10.3	16.3			5975-99-212-2857
06	44.5	28.6	1 1/4"	13.5	19.5			5975-99-535-9111
07	47.5	31.8	1 3/8"	16.7	22.6			5975-99-334-5291
08	50.8	35.0	1 1/2"	19.9	26.0			5975-99-225-7204
09	53.8	38.1	1 5/8"	23.0	29.2			5975-99-562-5061
10	57.1	41.3	1 3/4"	26.2	32.4			5975-99-350-1918
11	60.2	44.5	1 7/8"	29.4	35.5			5975-99-483-2058

NOTES:

1. THE ABOVE INFORMATION IS TYPICAL AND MANY OTHER OPTIONS & VARIATIONS ARE AVAILABLE, PLEASE CONSULT FACTORY.
2. APPLICABLE PANEL THICKNESS 1.40 - 15.00mm.
3. CABLE ACCOMMODATION DIMENSIONS ARE FOR CABLE ONLY. FOR CONDUIT, REDUCE THE MAXIMUM CABLE ACCOMMODATION BY 0.4mm FOR SIZES 01 TO 07 AND FOR SIZES 08 TO 11 BY 0.6mm.
4. NB, WHEN A CABLE/CONDUIT FALLS BETWEEN TWO ENTRY CODES, ENSURE THAT THE CABLE/CONDUIT DIAMETER IS AS CLOSE AS POSSIBLE TO THE MAXIMUM CABLE ACCOMMODATION. THIS WILL ENSURE THE BEST SCREENING AND SEALING.

07/08

**KEC LIMITED**

Orpheus House, Calleva Park, Aldermaston, Reading, Berkshire RG7 8TA England  
 Tel: +44 (0)118 981 1571 Fax: +44 (0)118 981 1570 email: sales@kec.co.uk www.kec.co.uk