

FLEXIBLE COUPLING

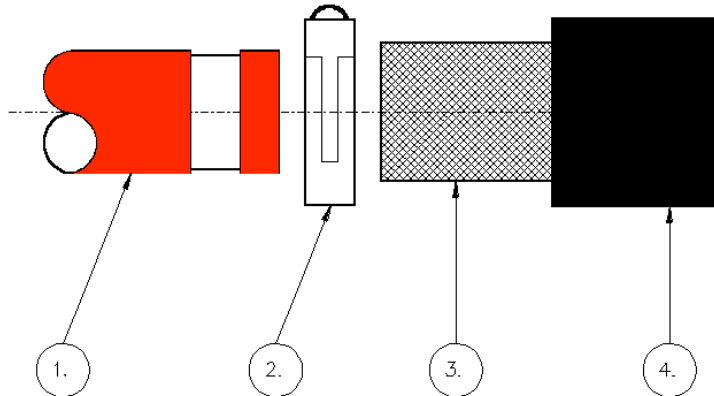


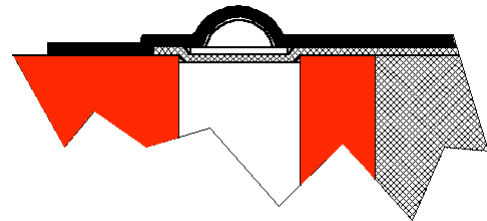
TABLE 1

ITEM No.	DESCRIPTION
1	SUPERTUBE (NOTE 4)
2	REWORKABLE BAND CLAMP
3	BRAID SOCK
4	HEAT SHRINK TUBE

TABLE 2

SIZE CODE	SUPERTUBE OUTSIDE DIAMETER
16	16.0
20	20.0
25	25.0
32	32.0

CROSS SECTIONAL VIEW OF FLEXIBLE COUPLING WHEN ASSEMBLED



TYPICAL PART NUMBER

KA0658-25-3500

SIZE CODE (TABLE 2)

LENGTH CODE (NOTE 2)

NOTES:

1. THE KIT CONSISTS OF TWO REWORKABLE BAND CLAMPS, A LENGTH OF BRAID AND A LENGTH OF HEAT SHRINK.
2. THE LENGTH OF THE FLEXIBLE COUPLING IS SPECIFIED IN MILLIMETRES. THIS IS THE LENGTH OF THE BRAID.
3. HEAT SHRINK TUBE IS SUPPLIED APPROX 50mm LONGER THAN THE BRAID.
4. SUPERTUBE NOT SUPPLIED WITH THE FLEXIBLE COUPLING CONTACT KEC SALES OFFICE FOR FURTHER INFORMATION ON SUPERTUBE, OTHER FITTINGS AND TOOLING.
5. IF A TERMINATION TO A GLAND OR A BACKSHELL IS REQUIRED, PLEASE CONSULT FACTORY.
6. FULL DATA SHEET AVAILABLE UPON REQUEST.

07/08

KEC LIMITED

Orpheus House, Calleva Park, Aldermaston, Reading, Berkshire RG7 8TA England
 Tel: +44 (0)118 981 1571 Fax: +44 (0)118 981 1570 email: sales@kec.co.uk www.kec.co.uk